





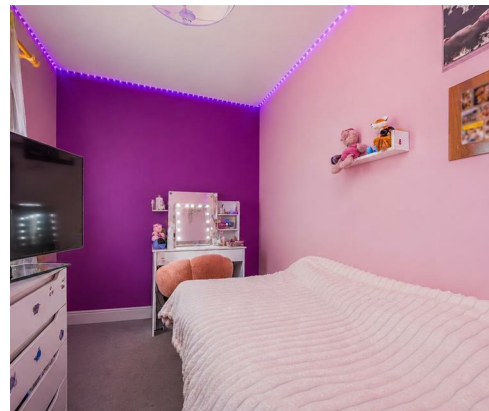
GUIDE PRICE £325k - £350k Over 1450sqft of accommodation! Situated within the highly sought-after Hawthorn Mews development, this attractive three-bedroom townhouse was built in 2016 and offers stylish, modern accommodation arranged over three floors. Beautifully presented throughout, the property is ideally suited to families and professionals seeking a spacious home in a convenient location.

The ground floor comprises a contemporary kitchen/dining room providing an excellent space for everyday living and entertaining, together with a separate utility room, cloakroom/WC and integral garage. The property also benefits from driveway parking to the front.

The first floor features a bright and spacious living room with a Juliet balcony allowing natural light to flood the room. This level also offers a generous double bedroom and a modern family bathroom. Occupying the top floor are two further well-proportioned bedrooms, including the impressive principal bedroom which benefits from its own en-suite shower room.

Outside, the rear garden has been beautifully maintained and provides an ideal space for relaxing and entertaining. Conveniently located close to local schools, shops and excellent motorway links, this superb home combines modern comfort with practical family living.

- THREE STOREY TOWNHOUSE
- BUILT IN 2016
- DRIVEWAY PARKING
- EN-SUITE TO PRINCIPAL
- THREE BEDROOMS
- BEAUTIFULLY PRESENTED GARDEN
- EXCELLENT TRANSPORT LINKS
- MODERN KITCHEN/DINER
- DOWNSTAIRS CLOAKROOM
- SPACIOUS LIVING ROOM



Brunel Way, Bedhampton

Approximate Gross Internal Area = 135 sq m / 1453 sq ft

(Excluding Reduced Headroom / Eaves)

Reduced Headroom = 0.5 sq m / 5 sq ft

Total = 135.5 sq m / 1458 sq ft



= Reduced headroom below 1.5m / 5'0

This plan is for layout guidance only. Not drawn to scale unless stated. Windows and door openings are approximate. Whilst every care is taken in the preparation of this plan, please check all dimensions, shapes and compass bearings before making any decisions reliant upon them.